

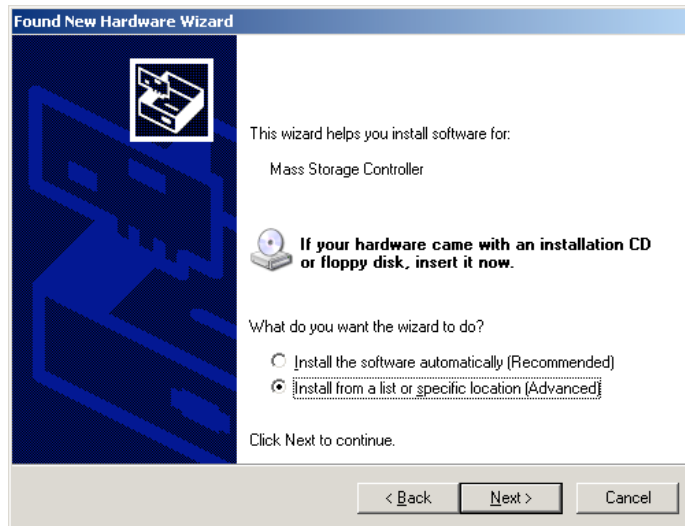
Step 3. Install the driver

1. Once the Fusion-io ioDrive has been installed into your computer, insert your Fusion-io USB key into any available USB slot.
2. Now turn your computer on and log into the system either as Administrator or with a user that has Administrative rights.
3. The Windows *Hardware Wizard* will detect that a new component has been installed into the system and a dialog will appear.



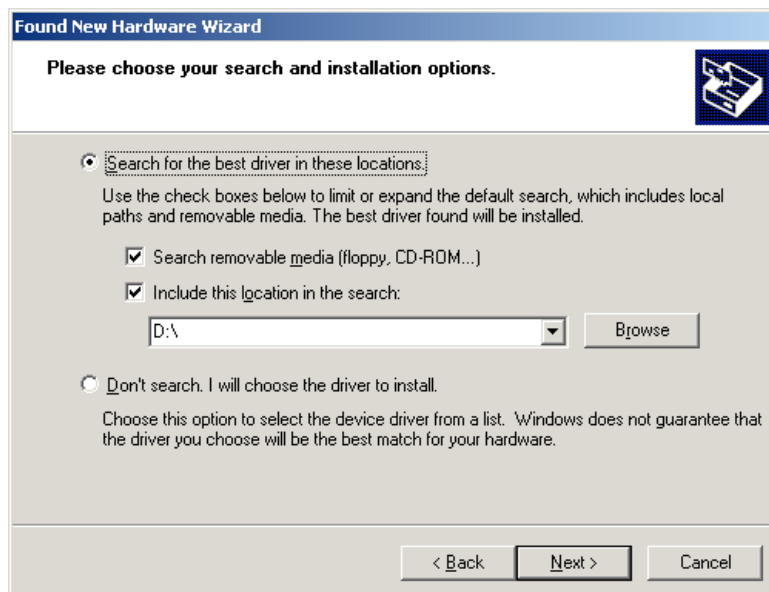
Select 'Yes, this time only' to allow the *Hardware Wizard* to locate the Fusion-io ioDrive™ files to install that are locate on your Fusion-io ioDrive™ USB key.

4. The *Hardware Wizard* will determine that a Mass Storage Controller has been install.



Select 'Install from a list or specific location' and press 'Next'.

5. The *Hardware Wizard* will display a dialog allowing you to choose the location of your Fusion-io ioDrive™ files.

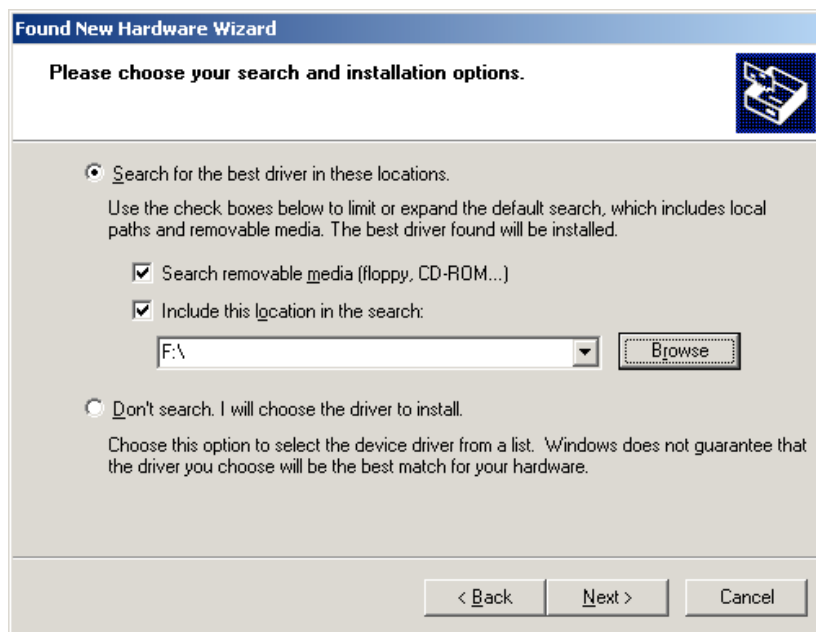


Select "Search for the best driver in these locations" and press "Browse" button.

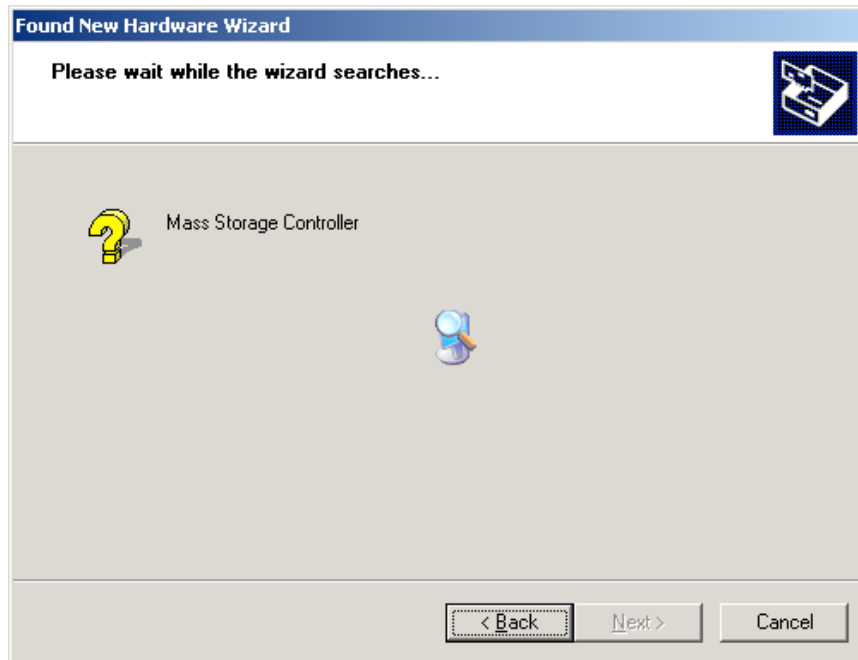
6. Select the drive that the Fusion-io ioDrive™ USB key is in and press “OK”.



7. Back on the “Found New Hardware Wizard”, select the “Next” button



8. The *Hardware Wizard* will now search your drives for the best possible match.

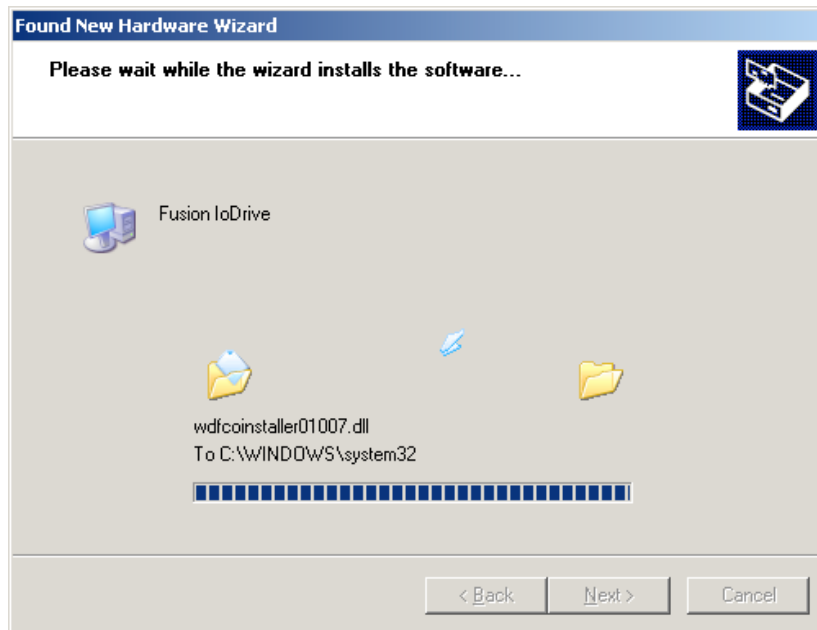


9. When the *Hardware Wizard* has located the Fusion-io ioDrive™ files, a dialog will display notifying you that the driver installation files have not been properly signed with Authenticode™ technology.

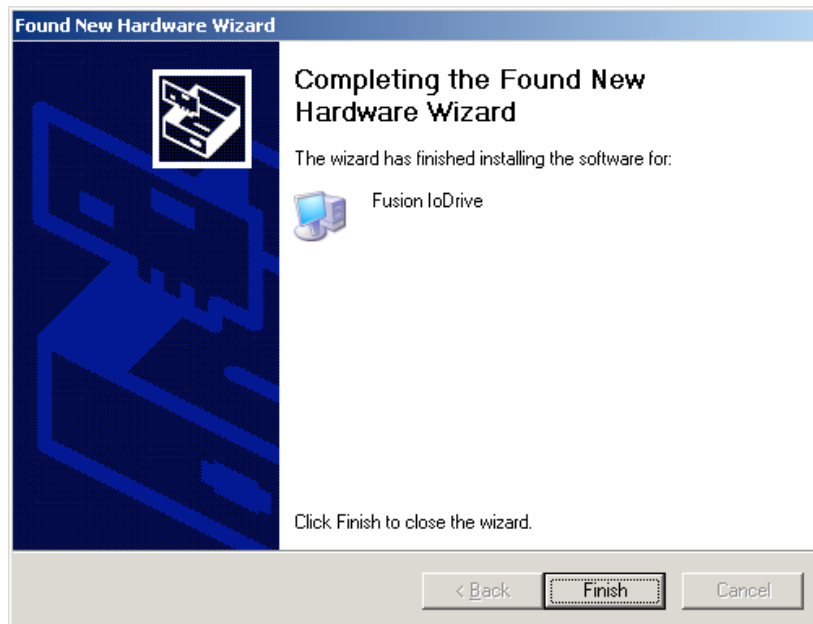


Currently you can ignore this warning and select 'Yes' to continue with the installation.

10. The *Hardware Wizard* will now install all the Fusion-io ioDrive™ files necessary.



11. Once all the files have been copied over to your computer, a dialog will appear that the installation has completed, select "Finish".



12. At this point you are ready to use your Fusion-io ioDrive™.